



National FFA Floriculture Plant ID



This PowerPoint was created to provide key characteristics of plants on the Plant Identification list of the National FFA Floriculture Career Development Event

Aechmea fasciata cv./ Silver Vase Bromeliad



- Stemless plant
- Stiff, arching, broad, strap-shaped, silvery-green leaves
- Plant 1-2' tall
- Leaf margins have black spines
- White scales on leaves can be rubbed off

Ageratum houstonianum/Ageratum



- Bedding plant
- Fluffy flowers in flattened to slightly rounded clusters atop compact, mounded plants
- 4" to 18" tall
- Leaves typically rounded, cordate-at-the-base, hairy, slightly quilted, soft green

Alstroemeria hybrid cv./ Peruvian Lily



- Top slender, upright stems in bushy clumps 2-3' tall

- Flowers yellow or orange often with spotting and streaking in terminal clusters of small, lily-like flowers

- Narrow, twisted, lance-shaped leaves ~4" long, veins run parallel to margins



Anemone coronaria/ Anemone



- Leaves medium green with basal leaves biternate and involucral leaves deeply divided.
- Solitary, showy, poppy-like flowers (2.5" in diameter) with 6-8 sepals
- Bloom in spring on stems 10-12" tall

Anethum graveolens cv./ Dill



- 3-5' tall on stiff hollow stems
- Aromatic, lacy, delicate, blue-green leaves pinnately divided into fine, thread-like segments
- Taller plants may flop and need protection from strong winds
- Scented, yellow flowers bloom in mid-summer in large, flattened, compound umbels (each to 10" diameter)
- Flowers followed by aromatic seed

Angelonia hybrid cv./ *Angelonia*



- 12-18” tall
- Oblong to lanceolate, green, slightly aromatic leaves (to 3” long) with toothed margins
- Bluish-purple flowers (3/4” across) bloom late spring to early fall in narrow terminal spikes (8” long)
- Two-lipped flowers similar to snapdragon
- Cultivars available in white, blue, light pink and bicolor

Anthurium x andraeanum cv./ Flamingo Plant



- About 16” tall
- Long-lasting, waxy, palette-shaped, bright-red spathes (flowers) with a yellow spadix
- Drooping, heart-shaped, dark green leaves arise on long stems from plant crown
- Flowers may appear throughout the year in optimum growing conditions

Antirrhinum majus cv/ Snapdragon



- Upright form
- Flower well from spring to fall
- Dragon-shaped, tubular, two-lipped, closed flowers
- Flowers come in both pastel and bright colors such as shades of white, yellow, red, pink, orange, peach and purple (some bicolors)
- Lance shaped, glossy dark green leaves (to 3" long)

Aphelandra squarrosa cv./ Zebra Plant



- Leaves are ovate to elliptic in shape
- Dark green leaves with zebra-like white veins
- Spikes of yellow-bracted flowers are long-lasting
- Typically pruned to 12-18" tall.

Araucaria heterophylla/ Norfolk Island Pine



- Has needles on stems as well as branches
- Needles are modified leaves
- Tree form
- Can get very tall (50-70 feet)

Asparagus densiflorus/ Sprengeri Fern



- Dense foliage forms arching mound that matures 1-3' tall and spreads 3-4' wide
- Leaflets create bushy tail
- Plant has small thorns

Aster pringlei/ Monte Cassino Aster



- Compact, clump-forming aster that forms rounded foliage mound 24-30" tall and wide
- Profuse daisy-like asters (1" diameter) with violet-blue rays and yellow center disks
- Flowers late summer to early fall.
- Narrow, oblanceolate to linear medium green leaves (4" long).

Astilbe hybrid cv./ Astilbe



- Graceful, fern-like mounds of mostly basal, 2-3 ternately compound leaves with sharply-toothed leaflets
- Tiny flowers densely packed into erect to arching, plume-like panicles rising above foliage on slender, upright stems

Begonia x semperflorens-cultorum/ Wax Begonia



- Waxy leaves gives glossy look
- Leaf margins look like torn paper, rough, ragged edges
- Leaves can be green or bronze

Begonia x tuberhybrida cv./ Tuberous Begonia



- 12-18" tall
- Brightly colored waxy-petaled flowers
- Colors ranging from white to yellow to apricot to pink to rose to red.
- Leaves are simple and have wavy or serrated margins.

Caladium x hortulanum cv./ Caladium



- Grows from a tuber
- Plants grow in clumps 1-2.5' tall
- One leaf per stem
- Arrowhead-shaped leaves (~1.5' long) various shades of green mottled and blotched with pink, red, white or combinations thereof; distinctively colored veins
- Calla-type flowers, if present, are usually hidden



Calibrachoa hybrid cv./ Million Bells



- Flowers look like small petunias
- Compact, mounded plants grow 3-9" tall on mostly trailing stems.
- Prolific bloomers produce hundreds of 1" wide flowers from spring to frost
- Flower colors include shades of violet, blue, pink, red, magenta, yellow, bronze, and white

Callistephus chinensis cv./ China Aster



- Ovate, toothed, medium green leaves.
- Cultivar height ranges from 8-inch dwarfs to 36-inch tall plants
- Flower varies by cultivar from single daisy-like heads with yellow centers to fully double flower heads with shaggy to pompom form
- Colors include shades of white to pink, red, blue, violet, purple and yellow.

Campanula hybrid cv./ Campanula



- Drooping, tubular, bell-like flowers (up to 2" long)
- Flowers purple, pink, white
- Erect to slightly arching stems

Canna x generalis cv./ Garden Canna



- Leaves come in variety of colors from variegated to green or red
- Can be 4-6' tall
- Large flowers resemble that of an iris
- Flowers are orange, yellow or red

Capsicum annuum/ Ornamental Pepper Plant



- Shrubby mounds 1-4' tall
- Lance-shaped to oval medium green leaves
- Star to bell-shaped white or yellow flowers give way to edible peppers ranging from extremely hot chili peppers to sweet bell peppers
- Many cultivars developed for ornamental use featuring attractive peppers in bright shades of red, yellow, purple, orange and brown.

Catharanthus roseus/ Vinca



- Flower bud has pinwheel shape
- Mounding 6-18” (less frequently to 24”) tall and as wide
- Flowers have five flattened petal-like lobes and appear in upper leaf axils
- Colors include pale pink, rose, hot pink, red, lilac, and white, often with contrasting darker throats/eyes
- Oblong to ovate glossy, green leaves (2” long) with white midrib

Celosia argentea cv./ Cockscomb



- Midrib gets progressively lighter in color towards end of leaf
- Fasciated, large crested flower heads (3-12" across), with each flower head somewhat resembling the comb of a rooster.
- Flower colors include bright shades of orange, red, purple, yellow and pink.
- Flowers bloom throughout summer into fall (sometimes to frost) on stems clad with spear-shaped green to red purple leaves.

Chamaedorea elegans/ Parlor Palm



- Small, compact, usually single-trunked palm
- Usually grows to 4' tall
- Dense, attractive foliage, compact shape and easy maintenance.
- Handsome, arching, green pinnate leaves, with 12 or more pairs of narrow leaflets per leaf, lend a tropical flair to indoor locations.

Chamelaucium uncinatum/ Waxflower



- Small, woody shrub
- Usually grows to 1.5 – 3' tall
- Erect growing habit
- Pink, purple or white flowers
- Flowers ½' across, occur along stems with needle-like leaves.
- “Uncinatum” means hooked at the point referring to the ends of the leaves.

Cholorophytum comosum cv./ Spider Plant



- It has linear leaves that are green or striped white.
- Flowering stems bear loose panicles of small, white, starry flowers.
- Plantlets are formed at the flowering nodes.
- When plants are full, they have an interesting, graceful, cascading habit.

Chrysanthemum x morifolium / Florist's Chrysanthemum



- Flower comes in many different styles
- Lobed, medium green leaves (to 2" long).
- Leaves have 5 main lobes

Clematis hybrid cv./ *Clematis*



- Leaves are compound, leaves attach to trellis to help hold the plant upright – veins palmate
- When petals fall off, usually leave pistil behind
- Grows as a vine so usually on a trellis or stake
- Very thin stem

Codiaeum variegatum pictum/ Croton



- Foliage is almost always multi-colored
- Woody plant that is grown for its foliage
- Can be cork screw or slender leaf, grown as a potted plant

Crassula argentea / Jade Plant



- Oblong, fleshy, shiny, evergreen leaves (to 2" long).
- Leaves may acquire red tints when grown in direct sun.

Cycas revoluta cv./ Sago Palm



- Symmetrical plant
- Trunk is thick and shaggy, typically about 7.9” in diameter
- Trunk is very low to ground in young plants, but lengthens above ground with age.
- Can grow over 20 feet of trunk in very old specimens.
- Trunk can branch several times, producing multiple heads of leaves.
- Leaves are shiny and dark green, and grow out into a feather-like rosette to 3.3 ft in diameter.

Cyclamen x persicum cv./ Florists' Cyclamen



- Margin has very fine teeth and a halo of light color
- Flowers can be a variety of colors, flowers fold up
- Very coarse leaf

Cymbidium cv./ Cymbidium Orchid



- Leaves are long and skinny compared to other orchids
- 5 petals to the flower
- In the throat has a rolled up “tongue” inside of throat
- No stem except for flower spike
- Backside has a sharp midrib
- Has “bulbs” just above the ground

Cymbopogon cv./ Lemongrass (herb)



- Tropical plant
- Ornamental grass
- Grows 2-4' high
- Leaves have lemon scent
- Used for culinary and medicinal purposes

Dahlia hybrid cv./ Dahlia



- Grows 1-6' Tall
- Bushy habit
- In Asteraceae family (with daisies, sunflowers, chrysanthemums and zinnas)
- Tuberos perennial
- Leafy stems with one flower head per stem
- Multi-layered flowers are unscented, bright and widely varied in color
- Popular garden plant and cut flower

Delphinium consolida cv./ Larkspur



- Perennial that grows 3-4' Tall
- Upright growth habit
- Multiple flowers combine to create long, spear-like flower heads
- Typically white, pink, lavender, blue or dark-blue flower color
- Deeply lobed leaves with three to seven toothed, pointed lobes in a palmate (hand) shape.
- Leaves can be very fine in texture, as shown in photo on left.

Dendrobium cv./ Dendrobium Orchid



- Thick, very apparent stem
- Smallest flower of all the orchids
- Leaf is rubbery
- Aerial roots (Above soil-line)

Dianthus caryophyllus cv./ Carnation



- 1 flower head per stem, ruffled edges of flower
- Grayish appearance to leaves & stem
- Very pronounced nodes and long internodes
- Leaves opposite in twos

Dracaena cincta / Red Edge Dracaena



- Grows on a stalk
- Bottom of the stalk sometimes drops its lower leaves – leaving a bare cane appearance
- Is a large upright plant
- Edges of the plant are indeed red

Echinocactus cv./ Barrel Cactus



- A cactus that can grow up to 2' tall.
- Almost perfectly round when young, but will sometimes stretch into an oval as it grows.
- Has evenly spaced spines and deeply ribbed lobes.

Epipremnum aureum cv./ Golden Pothos



- Leaves are always marbled either green & white or green & yellow
- Trailing growth pattern
- Stipule is a small piece of tissue that is fused to the stem, unlike philodendron, creates the appearance of a ribbed node

Erica carnea cv./ Spring Heather



- Grows 6" to 12" tall.
- Broadleaf evergreen with a mounding growth habit
- Light to dark pink, narrow, bell shaped flowers, 0.16-0.24" long
- 0.16-0.31" needle-like leaves

Eucalyptus polyanthemos / Silver Dollar Eucalyptus



- Large evergreen tree with upright growth habit.
- Matures to 30-75'.
- Foliage is aromatic, silver/green and about the size of a one dollar coin.
- Often used in floral arrangements for unique foliage.

Euphorbia pulcherrima cv./ Poinsettia



- Flowers are actually modified leaves known as bracts
- Midrib on the leaves is usually white
- They come in many colors but red is most common

Eustoma grandiflorum/ Lisianthus



- A biennial or annual
- Grows on erect single to sometimes branching stems to 3' tall.
- Large bell-shaped flowers (to 2" across)
- Flaring pale purple petal-like lobes bloom from the upper leaf axils.
- Flower colors including various shades of pink, blue-violet and white.
- Ovate to oblong, 3-5 veined, stem-clasping, gray-green leaves (to 3" long).

Exacum affine / Persian Violet



- A 6-12” tall annual with shiny green foliage.
- Tiny leaves of this rounded plant are oval in shape and densely cover the stems.
- Flowers are blue with bright yellow pollen masses in their centers appear in the spring and summer.
- The flowers are fragrant and will densely cover this plant if grown under the proper cultural conditions

Ficus benjamina cv/ Benjamin Fig



- Leaves can be solid green or variegated
- This is a tree – can be 1 foot to 20 feet tall
- Leaves have a “tail” on the end
- Produces white milky sap
- Woody Stem

Ficus elastica cv/ Rubber Plant



- New growth has reddish color
- Midrib has reddish color
- Leaf bud is very distinct
- The bud also has a sheath that will fall off

Fragaria x ananassa cv./ Strawberry Plant



- Five-petaled white flowers with yellow centers
- Flowers appear on the plants in early spring and give way to large red berries which mature in late spring to early summer.
- Leaves are compound with three leaflets and have serrated edges

Freesia x hybrida / Freesia



- Noted for fragrance and bright flower colors.
- Frost tender perennial that grow from corms.
- The large-flowered hybrids sold by florists feature sweetly fragrant, funnel-shaped flowers (5-10 per stem)
- Flowers bloom in one-sided racemes atop leafless, arching, wiry stems to 18" tall.
- Narrow, sword-shaped leaves appear in an iris-like fan.

Gardenia jasminoides / Gardenia



- Veins sit down/
indented into the leaf
- Leaves turn bright
yellow before they fall
off
- Flower buds have
sepals that stick up
- Waxy leaves
- Very fragrant

Gerbera jamesonii / Gerbera Daisy



- Flowers come in a variety of colors
- Stays low to the ground
- No visible stem except flower “stem”

Gladiolus x hortulanus cv./ Garden Gladiolus



- Flowers bloom stacked on top of each other, variety of colors
- Flowers come out alternate on the stem
- Midrib is raised on the leaf

Gomphrena hybrid cv./ Globe Amaranths



- 12-24” tall with an upright branching habit.
- The true flowers are insignificant, tiny, white to yellow trumpets that are only visible close up.
- The bright magenta bracts arranged in a globe shape have a papery-texture and clover-like flowerheads.
- Flowerhead colors include red, pink, purple, lilac, violet and white.
- Narrow oblong to elliptic green leaves (to 4” long).

Gypsophila elegans cv./ Baby's Breath



- Large clusters of white flowers, have a unpleasant odor
- Usually no foliage
- Stems come out at 45° angle

Hedera helix cv./ English Ivy



- Ground cover
- Vining, Trailing Growth Pattern
- Leaves have 3 main lobes
- Comes in solid green and different variegated patterns

Helianthus annuus / Sunflower



- Typically grows 5-10' tall on stiff upright stalks.
- Coarse, hairy, leafy, fast-growing annual
- Species plants feature 3-6" wide sunflowers with orange-yellow rays and brown to purple center disks.
- Flowers in bright and pastel shades of yellow, red, mahogany, bronze, white and bicolors
- Flower head shapes vary (short rays/petals, long rays, some doubles).
- Dwarf varieties (1-3' tall) and mammoth varieties (to 15' tall) are also available.
- Flower heads on mammoth varieties can reach 12" in diameter.
- Large, ovate to triangular, sandpapery leaves



Hemerocallis cv./ Daylily

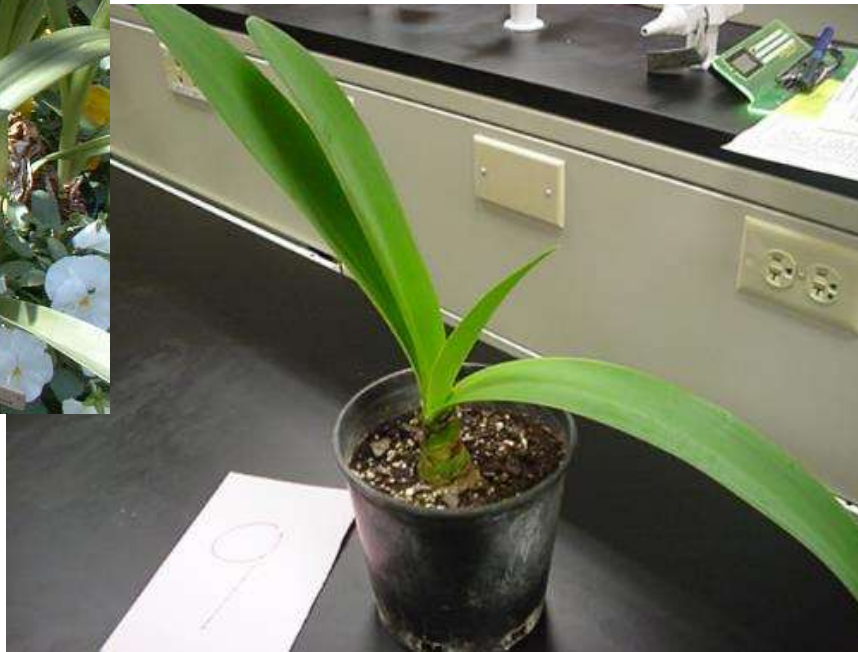


- Flowers are typically funnel-shaped to bell-shaped.
- Each flower has six segments.
- Flowers range in size from 3-8” across and ruffled edges.
- Flowers bloom on naked modified stems from spring to late summer.
- Each plant features grass-like to sword-shaped foliage.
- May grow from 1-6’ tall, but most mature to about 3-4’.
- Usually a perennial, but sometimes semi-evergreen or evergreen.

Hippeastrum hybrid cv./ Amaryllis



- Bulb, if planted correctly the bulb should show
- Leaves opposite, USUALLY same # on each side



- Does not have a pronounced mid-rib more of a swollen area on the back of the stem
- Large flowers, multiple flowers come out of same point

Hosta cv./ Hosta



- Herbaceous perennial that forms a clump.
- Primarily grown for their ornamental foliage.
- Variety of leaf shapes, sizes, colors and textures form a rounded to spreading mound of foliage.
- Bell or funnel-shaped flowers.
- Blooms in late spring or summer on vertical, unbranched, usually leafless stems.
- Stems with flowers rise upward from the crown or rootstock often well above the foliage mound.

Hoya carnosa / Wax Plant



- Climbing or trailing perennial of the dogbane and milkweed family.
- Grows 2-4' indoors.
- Trailing stems will climb counterclockwise around wire or other thin trellis-like structures.
- Plants feature glossy, elliptic, fleshy, dark green leaves (to 4" long)
- Tight rounded clusters (umbels) of fragrant white summer flowers.
- Each tiny flower (to 1/2" diameter) sports a distinctive, star-shaped, red-centered corona.
- Each cluster may include from 10-30 flowers.

Hyacinthus orientalis cv./ Hyacinth



- Flowers come in a variety of colors
- Leaf folds up into a boat shape
- Bloom very early in the spring,
- Very fragrant flowers
- Bulb has purplish tint with very flat bottom

Hydrangea macrophylla / Big Leaf Hydrangea



- Large clusters of sepals makes large flower heads
- Serrated edges on the leaf
- Leaf veins very noticeable and opposite

Impatiens hybrid cv./ Impatiens



- At the end of every vein is a small soft thorn
- Stem is translucent – can see through the stem
- It looks like the flower has two stems, but only one attaches to the plant. The other is a nectary gland, and pests like thrips can be found inside of it, lapping up nectar

Ipomoea batatas cv./ Ornamental Sweet Potato



- Tender perennial
- Popular root vegetable purple, chartreuse and variegated-leaved cultivars
- A popular ornamental foliage plant.
- Stems typically mound to 9" tall but spread by trailing stems to 8-10' wide
- Leaves of the ornamental varieties are heart-shaped to palmately lobed (to 6" long)
- Ornamental varieties usually do not flower.

Iris x xiphium cv./ Dutch Iris



- Smaller flowers compared to regular irises
- Bearded can be purple/ blue or yellow and white
- Leaves are very slim and silvery on the inside



Senecio cineraria / Dusty Miller



- Leaves silver or gray in color
- Lobed Leaf
- Leaves are fuzzy and soft to the touch

Justica brandegeana / Shrimp Plant



- Very long internode between leaves
- Flower is pink with yellow markings
- Shrub that has an open airy look – not compact
- Leaves are opposite

Kalanchoe x blossfeldiana cv./ Kalanchoe



- Has a spike of flowers that come in a variety of colors
- Leaf is waxy, scalloped on the edges

Leucanthemum x superbum / Shasta Daisy



- Grows 2-3' tall in upright clumps
- Flower is always white with yellow center
- Has a long leaf with teeth on the margins that point in an upward motion

Leucospermum hybrid cv./ Pin Cushion Protea



- Evergreen shrub grows to 19-40” tall.
- Leaves are spirally arranged, tough and leathery.
- Leaves are simple, linear to lanceolate, 0.8-4.7” long and 0.2-1.2” wide
- Leaves have a serrated margin or serrated at the leaf base only.
- The flowers are produced in dense inflorescences

Liatris spicata / Liatris



- Grows one flower per stem
- Flowers are usually purple
- Foliage is very dense, grass-like leaves

Lilium hybrid cv./ Asiatic or Oriental Lily



- Blooms come in many different colors
- The “stem” that attaches each flower to the plant is longer than on an Easter lily

Limonium sinuatum / Statice



- Purple is most common but also come in blue, white, and yellow
- Stem and flower are very paper like
- Stem also has a winged edge

Lobularia maritima / Alyssum



- Very small delicate flowers – flowers can be shades of white, pink, or purple
- Grows in a mounded shape
- Leaves are roughly 1 inch long and only $\frac{1}{4}$ inch wide
- Smells very sweet

Maranta leuconeura / Prayer Plant



- Coloring in between the veins of leaves is always a reddish tint
- New leaf is rolled as it starts to emerge
- Shape of the leaf is very wide and leaf turns up at the margins



Matthiola incana cv./ Stock



- Flowers come in different colors, blooms in clusters
- Fuzzy leaf, leaves are very long and slender
- Very fragrant



Monstera deliciosa / Split Leaf Philodendron



- Leaves are solid green
- Deep “cuts” start almost at the midrib and move to edge of the leaf
- Actually grows out as a vine

Narcissus hybrid cv./ Daffodil or Narcissus



- Flower resembles “tea cup & saucer”
- Are usually yellow, white, or a mixer of the 2 colors
- Leaf is flat with a very round end
- Bulb is tear dropped shape



Nephrolepis exaltata cv./ Boston Fern



- Typically in a hanging basket
- Fern leaves are known as fronds
- The fronds are solid green in color
- Fronds droop over to cover the pot

Ocimum basilicum cv./ Basil



- Grown as an annual
- Grows between 12–51” tall
- Leaves are opposite one another, light green, and silky
- Leaves are 1.2–4.3” long and 0.39–2.36” wide.
- The flowers are small, white in color and arranged in a spike.
- Fragrant herb used in cooking.

Opuntia cv./Prickly Pear Cactus



- Flat/ pad surface
- Has thorns
- The pads connect directly on top of each other

Paeonia cv./ Peony



- Herbaceous perennial
- Grows 1.5-3'
- Leaves are compound, large and deeply lobed
- Flowers vary in colors ranging from purple red to white or yellow

Paphiopedilum hybrid cv./ Lady's Slipper Orchid



- Characterized by the slipper-shaped pouches of the flowers
- Not an epiphyte, so planted in root medium
- The pouch traps insects so they are forced to climb up into the flower to collect or deposit pollen, thus fertilizing the flower

Pelargonium x hortorum cv./ Zonal Geranium



- Un-opened flower buds face down
- Flower “stem” is very long and raises above foliage
- Fragrant flowers bloom in clusters
- Leaves are round-oval with ruffled edges

Pelargonium peltatum cv./ Ivy Geranium



- Very stout, wavy lobes on the leaf
- Not as hairy as regular geranium

Pentas hybrid cv./ Pentas



- A tropical woody-based perennial that grows to 1-2' tall in beds or containers.
- A many-branched, somewhat sprawling plant
- Features 4" wide rounded clusters of star-shaped flowers.
- Elliptic to lanceolate dark green leaves (to 6" long).
- Flowers are pink, magenta, lilac or less commonly white.

Petroselinum crispum cv./ Parsley



- Biennial, grown as an annual.
- Grows in a clump to 12" tall and as wide.
- Triangular dark green leaves are finely divided into curly or flat leaflets.
- Plants will bloom in the 2nd year by sending up stalks to 2-3' tall bearing compound round shaped clusters of greenish-yellow flowers.

Petunia x hybrida cv./ Petunia



- Trumpet/ tube shaped flower – lots of colors
- All the petals are attached together
- Leaf is pointed and fuzzy, stem is fuzzy
- Plant typically grows in a downward pattern

Phalaenopsis cv./ Moth Orchid



- Leaves attach to a main stem and stay low the bottom of the stem
- Very hard leathery leaf
- Flower – has two distinct “wings”

Philodendron scandens oxycardium / Heartleaf Philodendron



- Leaves heart shaped
- Can be variegated or solid green leaves
- Stem is very smooth, very round
- Stipule is a small piece of tissue that is NOT fused to the stem, unlike pothos

Pilea cadierei / Aluminum Plant



- Leaves arranged opposite one another
- This is an upright, herbaceous perennial that is noted for its textured green and silver foliage.
- Typically grows in a shrubby clump to 12" tall.
- Elliptic to obovate, toothed, dark green leaves (to 3" long)/
- Two silver stripes on leaves

Portulaca oleracea cv./ Portulaca



- Features 2” diameter flowers in orange, yellow, red, pink, white and bicolors.
- Plants typically grow 4-8” tall and spread to 15” wide.
- Flowers bloom summer to frost.
- Spatulate to ovate, flat, fleshy leaves (to 1.25” long).

Primula malacoides cv./ Primrose



- Grows low to the ground
- Raggedy edge on the leaf
- Flowers in clusters
- Center of the flower is always yellow
- Veins are very distinct

Ranunculus hybrid cv./ *Ranunculus*



- Herbaceous perennial
- Finely-cut, parsley-like leaves
- Grows in a mound to 12" tall
- Some cultivars have peony-like flowers.

Rhododendron simsii cv./ Florist Azalea



- Medium to large evergreen shrub
- Leaves oval in shape and have small hairs on the top
- Woody stem

Rosa hybrid cv./ Hybrid Tea Rose



- One flower per stem
- Petioles have a reddish tint
- Has thorns

Rumohra adiantiformis / Leatherleaf Fern



- Multi compound leaves
- Has a hairy stem that is very long
- Will sometimes have small, brown spores, which look like seeds, on the back of the leaf

Saintpaulia ionantha cv./ African Violet



- Simple 5 petal flowers, one per 'stem' in large cluster
- Small indentations on the leaves
- Fuzzy leaf & petiole

Salvia splendens cv./ Salvia



- Comes in a variety of colors, flowers is upright on a stalk with lots of blooms on one stem
- Has a square stem
- Leaf is triangle in shape

Sansevieria trifasciata cv./ Snake Plant



- Plants will have a pattern on leaf similar to snake skin
- Upright spiked leaf form

Schefflera arboricola / Dwarf Schefflera



- Leaves can be variegated or solid green
- palmately compound leaf
- Green, thick stem

Schlumbergera bridgesii / Christmas Cactus



- “Leaves” are actually a modified, flattened stem
- Leaves attach one on top of the other

Sempervivum hybrid cv./ Hens and Chicks



- Called hens and chicks because “babies” come out under mother plant
- Thick stem, waxy leaves
- Soft point at end of each leaf
- in the succulent family

Senecio x hybridus cv./ Cineraria



Sinningia speciosa Fyfiana Group cv./ Florists' Gloxinia



- Flowers are trumpet shape
- Very large leaves
- Leaves are slightly hairy similar to African violet leaves

Solidago hybrid cv./ Solidago



Solenostemon scutellarioides / Coleus



- Leaves come in multiple sizes, shapes, and colors
- Square stem
- Leaves are opposite

Spathiphyllum / Peace Lily



- Leaves can be solid green or variegated
- Flower is always white
- long pointed leaf
- Veins are cut into the plant

Stephanotis floribunda / Stephanotis



- Grows to 20' or more
- An evergreen woody climber
- Glossy, leathery oval leaves
- Clusters of pure white, waxy, intensely fragrant tubular flowers

Strelitzia reginae/ Bird of Paradise



- Has a bold structure, which forms large evergreen clumps of stiff leaves growing up from the base.
- The grey-green banana-like leaves grow about 3 ½ to 4 feet in height and the flowers stand above the foliage at the tips of long stalks.
- Structure of flower gives it the appearance of a bird's head.
- The flowers consist of 3 orange sepals and 3 bright blue petals.

Syngonium podophyllum / Nephthytis



- Veins are different coloration from leaf – usually white
- Arrowhead shaped leaf

Tagetes species cv./ Marigold



- Has a very distinct odor to ward off pests
- Leaves are compound
- Flowers grow in a pom/pom shape
- Flower colors are typically shades of red, yellow, and orange

Tradescantia zebrina / Wandering Jew



- Always purple in color, comes in darker shades of purple and purple/green combo
- End leaf points straight out

Tulipa cv./ Tulip



- Leaves have gray coating that rubs off
- At end of life, flower opens all the way up
- Leaf wraps around the stem



- Small, round bulb with a papery “skin” called a tunic

Verbena hybrid cv./ *Verbena*



- Stems and leaves are slightly hairy
- Flowers in small clusters and in a variety of colors
- Leaves are triangle shape

Viola x wittrockiana cv./ Pansy



- Flowers have two layers of petals
- Leaves have scalloped edges

Zantedeschia hybrid cv./ Calla Lily



- Bulb
- Flowers and leaves rise directly from rhizomes.
- Typically grow in clumps to 24-36" tall
- Feature large arrowhead-shaped (sagittate) leaves
- Extremely showy flowers Commercially grown as a very popular cut flower.

Zinnia cv./ Zinnia



- Annual
- Composite, brightly colored flowers
- No petiole – leaves go right up to stem
- Growth pattern is upright
- 3 midribs to each leaf