

The image shows a wide expanse of a desert canyon. The rock formations are characterized by distinct horizontal layers, suggesting sedimentary deposition. The colors range from light tan to deep red and brown. The terrain is highly textured with numerous small peaks, ridges, and valleys. The sky is a uniform, clear blue, providing a stark contrast to the earthy tones of the landscape. The overall scene conveys a sense of ancient geological processes and a harsh, arid environment.

Garrett Craig

3rd odd

National Park Service

The NPS was founded on August 25, 1916.

According to the website, “The National Park Service is dedicated to conserving unimpaired the natural and cultural resources and values of the National Park System for the enjoyment, education, and inspiration of this and future generations.”

The NPS manages and maintains several natural parks.

12,363 Employees as of 2018

Margaret Everson Is in charge of the NPS

A bison is running across a vast, green, grassy field. The bison is dark brown and is captured in mid-stride, moving from left to right. The field is flat and extends to a distant horizon. The sky is blue with scattered white and grey clouds. The text "Badlands" is overlaid in white, sans-serif font, centered horizontally and partially overlapping the bison.

Badlands

25216 Ben Reifel Road
Interior, SD 57750

Map



Nature

Animals at Badlands National Park:

Bison, Black footed ferrets, prairie dogs, birds, reptiles, and prairie rattlesnakes.



Nature

Plants are mostly grasses and sod
tables



Nature

Some environmental factors are affected by erosion and deposition

Some of the formations in the park contain sandstones, siltstones, mudstones, claystones, limestones, volcanic ash, and shale



Prescribed Burn

- Superintendent Mike Pflaum announces plans for a prescribed burn in the Heck Table area of Badlands National Park.

article <https://www.nps.gov/badl/learn/news/prescribed-burn.htm>

Environmental Assessment for Cedar Pass Development Concept Plan Available for Public Review

The government released the concept plan for Cedar Pass.

<https://www.nps.gov/badl/learn/news/environmental-assessment-for-cedar-pass-development-concept-plan-available-for-public-review.htm>

Mike Pflaum Selected as Superintendent of Badlands National Park

Mike Pflaum veteran of the National Park Service, was has been selected as the new Superintendent of Badlands National Park.

<https://www.nps.gov/bad/learn/news/mike-pflaum-selected-as-superintendent-of-badlands-national-park.htm>

A photograph of a desert badlands landscape. The foreground is a sandy, light-colored area with sparse green vegetation. In the middle ground, there are several large, rounded, and eroded rock formations. The background features more prominent, layered rock structures under a clear blue sky.

2019 Discover Badlands Event

2019 Discover Badlands Event to be held July 24 from 10 AM to 3 PM.

<https://www.nps.gov/bad/learn/news/nr19-02.htm>

Badlands National Park Accessible to Public With No Services During Government Shutdown

During the federal government shutdown, Badlands will remain open. However, there will be no visitor services, and hazardous or dangerous conditions may exist.



https://www.nps.gov/bad/learn/news/shutdownoperations_12-2018.htm

History

It officially was proclaimed and founded as a national monument in 1939. It became a national park by an act of Congress in 1978.

President Franklin Roosevelt

According to the National Park Service, the name stems from roughly analogous terms coined by Oglala [Lakota](#) and French fur trappers, which translate to "land bad" and "bad lands to travel across."



History

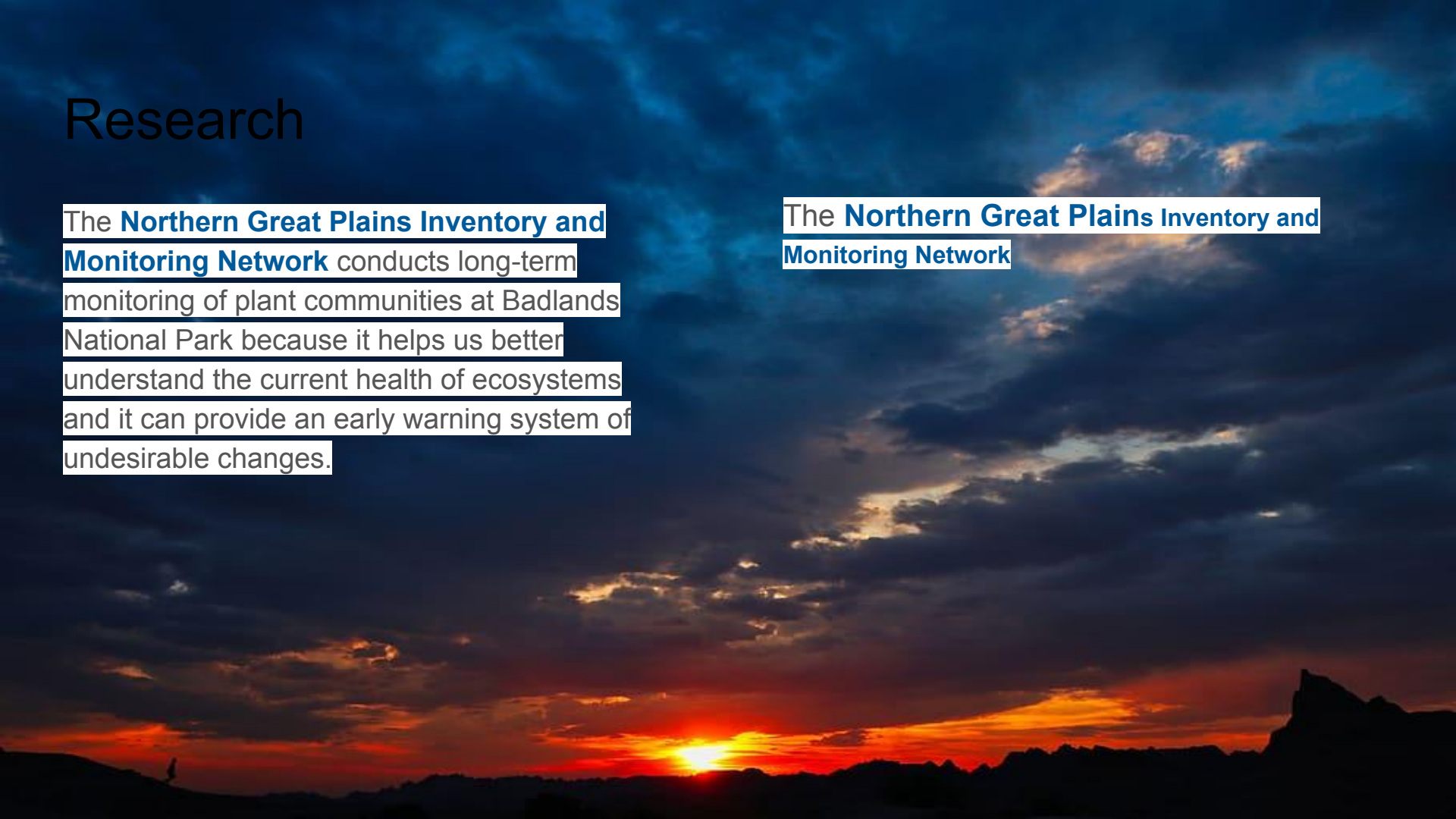
As part of the war efforts, the U.S. Air Force took possession of 341,726 acres of land on the Pine Ridge Reservation, home of the Oglala Lakota people, for a gunnery range.



Research

The **Northern Great Plains Inventory and Monitoring Network** conducts long-term monitoring of plant communities at Badlands National Park because it helps us better understand the current health of ecosystems and it can provide an early warning system of undesirable changes.

The **Northern Great Plains Inventory and Monitoring Network**



Management

The number of workers is undisclosed

In 2017, 1,054,325 , people visited the Badlands National Park



Other Park Information

It is located in South Dakota, and its highest elevation is 3,247 feet.



5 things to do at the park

1.camp

Camping permit

2.sight see

nothing

3.study plants

Nothing

4.watch animals interact

Nothing

5.become a jr.ranger

nothing



5 interesting facts not listed anywhere else.

- 1 you could find saber tooth cat fossils
- 2 it has a small town feel
- 3 it is a great place to learn about native american culture
- 4 over 7,500 stars fill the sky
- 5 it is a very scenic place.

