



Agriscience

Teacher Information

TERRI LEA

Room 508

Email: Tlea@tipton-county.com

Brighton FFA Chapter

Website: www.brightonffa.ffaNOW.org

Dues: \$15 - includes a Tshirt

Course Description:

Agriscience is an introductory laboratory science course that prepares students for biology, subsequent science and agriculture courses, and postsecondary study. This course helps students understand the important role that agricultural science and technology plays in the twenty-first century. In addition, it serves as the first course for all programs of study in the Agriculture, Food, & Natural Resources cluster. Upon completion of this course, proficient students will be prepared for success in more advanced agriculture and science coursework.

What is Agriculture Education?

Classroom Instruction:

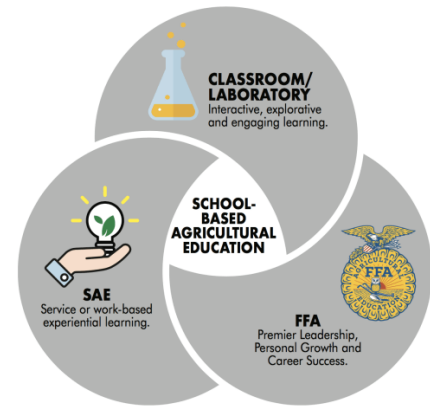
Gives students a practical approach to the theories of science and how those theories are used in agriculture, the largest science industry in the nation.

Supervised Agricultural Experience:

Teaches your student industry skills through a hands-on project supervised by an instructor. This can involve raising an animal, growing a garden, starting a business or interning at an existing business.

FFA Leadership:

Uses Career Development Events to evaluate students' understanding of agriculture as learned in class, and sharpens students' speaking and leadership skills



Google Classroom

Class Codes

2nd Even: jsrxrhh

2nd Odd: npga2ar

3rd Cl: tcf57ln

4th Cl: i7ooblr

Icev

Invite Code

2nd Even - TIPLEABR079

2nd Odd - TIPLEABR078

3rd - TIPLEABR084

4th - TIPLEABR085

Grading Procedures

50% - Classwork

15% - Test

20% - Lab - hands on outside of classroom

15% - Projects

Classroom Expectations


LEARNING TO DO - Students are expected to be prepared for class.


DOING TO LEARN - Students are expected to participate in all aspects of class.


EARNING TO LIVE - Everything will be earned - grades, respect and privileges.

LIVING TO SERVE - Students are expected to show integrity.

Classroom Procedures

 If the device is not being used for educational purposes, your cell phone, computer or tablet should not be visible.

 Students must leave on their appropriate dismissal and may not stand by the door waiting.

 Face Coverings are optional unless it is mandated by Tipton County Schools. Practice Social Distancing always.



Students must ask permission before going to the bathroom or any other place on campus. You must always sign out.



If you are not in the classroom when the tardy bell rings then you will be marked tardy.



Students must use their Tipton County email assignments and correspondence.