



Greenhouse Management

Teacher Information

TERRI LEA

Room 508

Tlea@tipton-county.com

Brighton FFA Chapter

Website: www.brightonffa.ffanow.org

Dues: \$15 - includes a tshirt

Course Description

Greenhouse Management is an applied-knowledge course designed to prepare students to manage greenhouse operations. This course covers principles of greenhouse structures, plant health and growth, growing media, greenhouse crop selection and propagation, and management techniques. Upon completion of this course, proficient students will be equipped with the technical knowledge and skills needed to prepare for further education and careers in horticulture production. Greenhouse Management is a dual credit course with statewide articulation.

What is Agriculture Education?

Classroom Instruction:

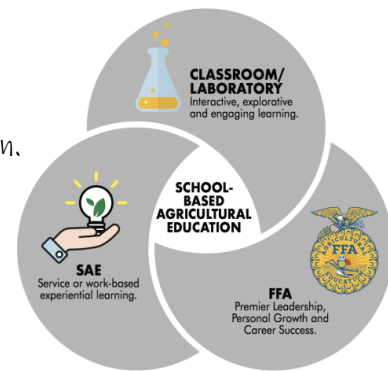
Gives students a practical approach to the theories of science and how those theories are used in agriculture, the largest science industry in the nation.

Supervised Agricultural Experience:

Teaches your student industry skills through a hands-on project supervised by an instructor. This can involve raising an animal, growing a garden, starting a business or interning at an existing business.

FFA Leadership:

Uses Career Development Events to evaluate students' understanding of agriculture as learned in class, and sharpens students' speaking and leadership skills



Google Classroom

Class Codes

1st Odd: nomezsn

1st Even: xiu45u6

Icev

Invite Codes

1st Odd - TIPLEABR077

1st Even - TIPLEABR076

Grading Procedures

50% - Classwork

15% - Test

20% - Lab - hands on outside of classroom

15% - Projects

Classroom Expectations


LEARNING TO DO - Students are expected to be prepared for class.


DOING TO LEARN - Students are expected to participate in all aspects of class.


EARNING TO LIVE - Everything will be earned - grades, respect and privileges.

LIVING TO SERVE - Students are expected to show integrity.

Classroom Procedures

 If the device is not being used for educational purposes, your cell phone, computer or tablet should not be visible.

 Students must leave on their appropriate dismissal and may not stand by the door waiting.

 Face Coverings are optional unless it is mandated by Tipton County Schools. Practice Social Distancing always.



Students must ask permission before going to the bathroom or any other place on campus. You must always sign out.



If you are not in the classroom when the tardy bell rings then you will be marked tardy.



Students must use their Tipton County email assignments and correspondence.